

# One Care Team One-Stop Care



Healthcare Redesigned

### **NUHS Mission**

**To advance health  
by synergising care,  
education and research,  
in partnership with patients  
and the community.**

### **NUHS Vision**

**A Healthy Community  
Shaping Medicine  
Transforming Care**

### **Alexandra Hospital Purpose Statement**

**We redesign healthcare  
with and for humanity.**

# Alexandra Hospital is Open

The new Alexandra Hospital experience is designed to meet patients' needs at every step of your healthcare journey – from prevention to early intervention, consultation, admission, discharge, and post-discharge.

We care for our patients through our one care team, comprising of Nurses, Allied Health Professionals, Service Associates, Care Managers, Pharmacists, and supported by Specialists.

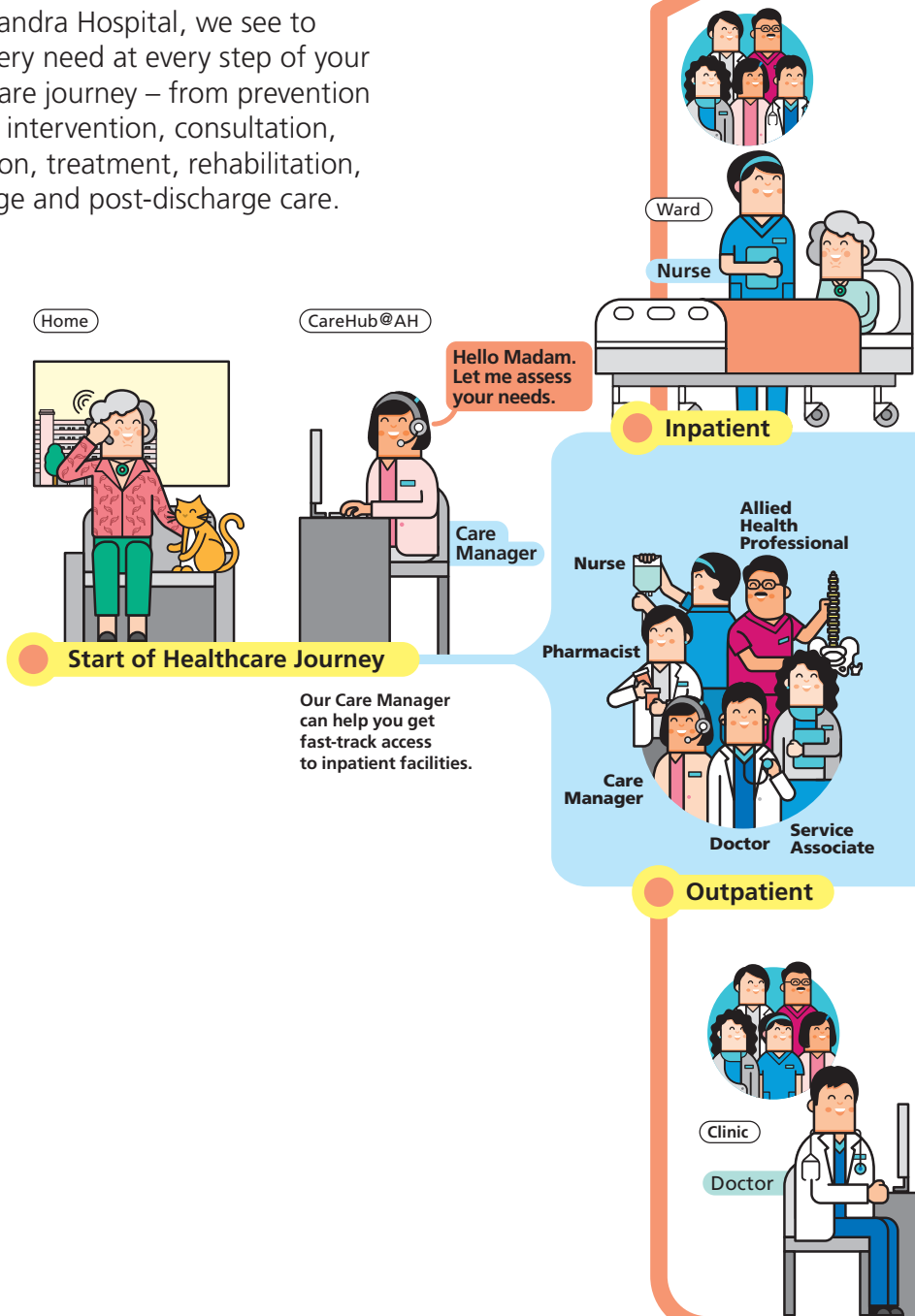
We are the first integrated hospital which provides a single continuum of care across different care settings from acute, sub-acute to rehabilitative care.

For our inpatients, we offer a same-bed, one-stop care across different stages of the recovery journey, thereby offering greater convenience, saving time and the hassle of inter-hospital transfers.

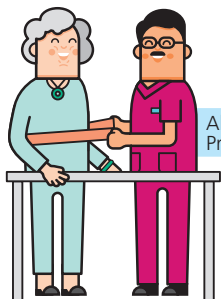
Our out-of-hospital care programme brings together community members from primary care to daycare and social services, helping patients to live better in the comfort of their homes and in the community.

# One Continuous and Integrated Model of Care

At Alexandra Hospital, we see to your every need at every step of your healthcare journey – from prevention to early intervention, consultation, admission, treatment, rehabilitation, discharge and post-discharge care.



Acute and rehabilitation care are co-located under one roof, avoiding unnecessary transfer.



Allied Health Professional

CareHub @AH



Care Manager

## One Care Team

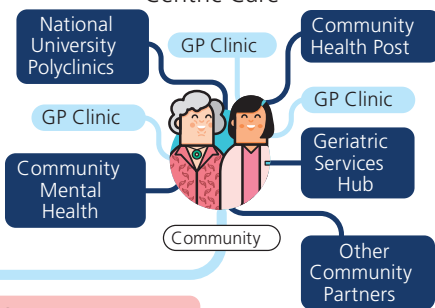
You will be managed by a multidisciplinary care team, led by the principal doctor.

## Out-of-Hospital Care

Your outpatient appointments will be consolidated, thus cutting down on multiple visits.



## Community-Centric Care

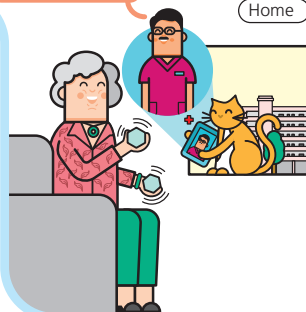


Our Care Manager can help you navigate care by linking you up with resources in the community.

Allied Health Professional

Hello, let us continue your rehabilitation.

Home



Our community health teams will check in on you, to help you live better in the comfort of your home and community.

# One Touch Point, One-Stop Care

The new Alexandra Hospital experience will deliver holistic, continuum of care from the well, to acute care, long-term management of chronic conditions, geriatric care, to those who need end-of-life support, in five key programmes.

## Five Programmes, One Redesigned Healthcare Journey:



### **Be Better** PREVENTIVE CARE

Take the first step towards health empowerment and prevention with our **Well Programme** by being proactive with screening, exercise and treatment.



### **Age Better** ELDER CARE

#### Clinic K (Healthy Ageing Clinic)

Our **Healthy Ageing Programme** cares for the elderly's mind, mobility and sensory, orthopaedic and other geriatric and social needs holistically.



### **Get Better** ACUTE CARE

**24-Hour, Walk-in Urgent Care Centre**  
The **FAST Programme** looks at emergency treatment from acute, sub-acute to rehabilitative care at our integrated wards.



### **Cope Better** SUPPORTIVE AND PALLIATIVE CARE

Champions for compassionate care and quality of life, at every age and at every stage, our **Supportive and Palliative Care Programme**:

- Enables and empowers everyone to care.
- Encourages caring across boundaries.
- Creates caring systems.
- Helps all to live well before leaving well.



### **Live Better** CHRONIC CARE

#### Clinic J (Integrated Care Clinic)

The **Chronic Programme** led by one doctor and one care team consolidates a patient's multiple conditions and treatment plans including medication and rehabilitation regime, into one appointment.

# Our Services and Facilities

We have a team of experienced and dedicated doctors and nurses who offer a comprehensive suite of medical services including surgical procedures and allied health services.

## Medical Specialties

- Advanced Internal Medicine
- Cardiology
- Dermatology
- Endocrinology
- Gastroenterology
- Geriatric Medicine
- Haematology
- Infectious Diseases
- Neurology
- Nephrology
- Palliative Care Medicine
- Psychological Medicine
- Rehabilitation Medicine
- Respiratory and Critical Care Medicine
- Rheumatology
- Sleep Medicine

## Other Specialties

- Diagnostic and Interventional Radiology
- Emergency Medicine
- Laboratory Medicine
- Pathology

## Surgical Specialties

- Anaesthesiology
- General Surgery
  - Breast surgery
  - Colorectal surgery
  - Endocrine and thyroid surgery
  - Hepatobiliary and pancreatic surgery
  - Minimally invasive surgery
  - Upper gastrointestinal surgery
- Hand and Reconstruction Microsurgery
- Gynaecology
- Ophthalmology (Eye)
- Orthopaedic Surgery
- Otolaryngology (Ear, Nose and Throat)
- Plastic Surgery
- Neurosurgery
- Thoracic Surgery
- Urology
- Vascular Surgery

## Other Services

- Care & Counselling
- Clinical Measurement Centre
- Dietetics
- Endoscopy
- Occupational Therapy
- Physiotherapy
- Podiatry
- Speech Therapy

The hospital is equipped with a broad range of medical facilities to support your healthcare needs.

## Our Facilities

- |  |   |                          |
|--|---|--------------------------|
| • 24-Hour Urgent Care Centre                 | • General Surgery Clinic                      | • Palliative Clinic      |
| • Ambulatory Surgery Centre                  | • Gynaecological Clinic                       | • Plastic Surgery Clinic |
| • Anaesthesia Outpatient Consultation Clinic | • Hand and Reconstruction Microsurgery Clinic | • Pharmacy               |
| • Clinical Measurement Centre                | • Healthy Ageing Clinic                       | • Rehabilitation Centre  |
| • Core Laboratory                            | • Integrated Care Clinic                      | • Urology Clinic         |
| • Day Surgery Operating Theatres             | • Integrated Wards                            | • Vascular Clinic        |
| • Diagnostic Imaging                         | • Intensive Care Unit                         |                          |
| • Ear, Nose and Throat Clinic                | • Major Operating Theatres                    |                          |
| • Endoscopy Centre                           | • Neurosurgery Clinic                         |                          |
| • Eye Surgery Centre                         | • Orthopaedic Surgery Clinic                  |                          |
|  | • Outpatient Infusion Centre                  |                          |



# Welcome to Alexandra Hospital

## Quality Care

We've redesigned healthcare  
to provide a seamless and  
holistic journey under our  
one care team.



## Advanced Technology

We provide  
comprehensive imaging  
and diagnostic radiology  
facilities and clinical  
laboratories.

## Convenient Amenities and Facilities



### Garden and Colonial Setting

The lush greenery and rustic colonial facade gives the hospital a unique charm amidst a tranquil and relaxing surrounding.



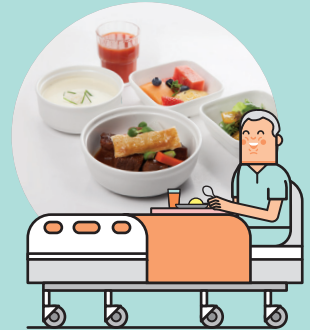
### Wards

Our wards provide a conducive environment with good ventilation for patients to recuperate and spacious areas to foster interactivity.

### Food and Dining

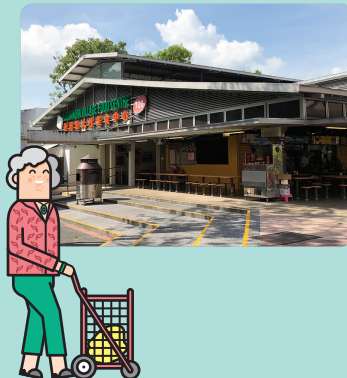
Our dieticians and doctors work closely with our chefs to create a specially planned menu for our patients. We also tailor special menus for those who are on therapeutic or textured diets.

At the hospital's main lobby, you'll find a 24-hour convenience store and a cafe for visitors to have a warm meal. There are food and drink vending machines too around the hospital to grab a quick bite.



### ATMs and Payment Kiosks

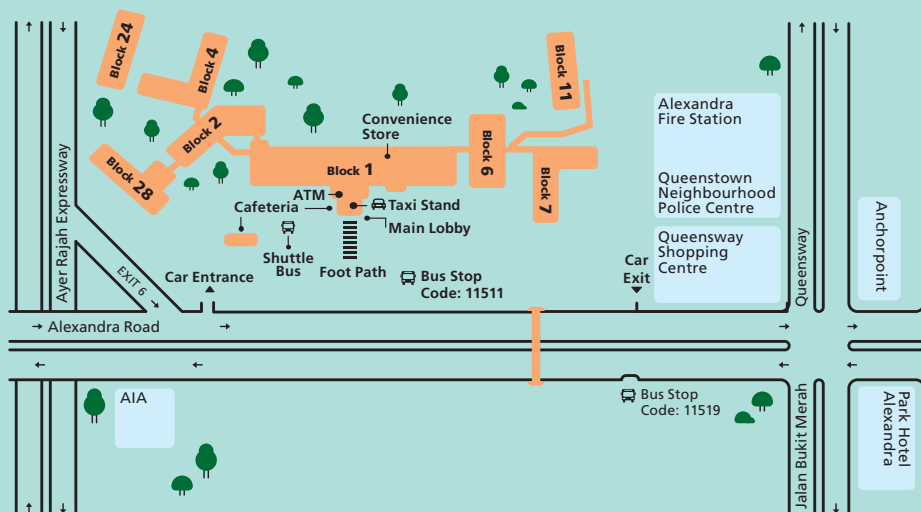
The hospital's main lobby has a POSB ATM, AXS kiosk, SAM kiosk and CashCard top-up machine.



### Nearby Places

The surrounding area has various shopping and dining options, including Queensway Shopping Centre, Anchorpoint and Alexandra Village Food Centre.

# How to Get to Alexandra Hospital



## By Public Bus

### Alight Alexandra Hospital Bus Stop (Code 11511)

Take buses: 14, 33, 51, 61, 93, 100, 120, 195, 197

### Alight Opposite Queensway Shopping Centre Bus Stop (Code 11519)

Take buses: 14, 33, 51, 61, 93, 100, 120, 195, 197



## By MRT

### From Queenstown MRT Station

Buses 51, 195

### From Commonwealth MRT Station

Bus 100

### From Redhill MRT Station

Buses 33, 120



## By Shuttle Bus

### From Queenstown MRT Station to Alexandra Hospital

Weekdays excluding  
Public Holidays

- **Queenstown MRT Station, Exit B**  
First bus: 6.40am  
Last bus: 8.30pm
- **Alexandra Hospital Main Lobby**  
First bus: 6.40am  
Last bus: 8.45pm

Saturday, Sunday  
and Public Holiday

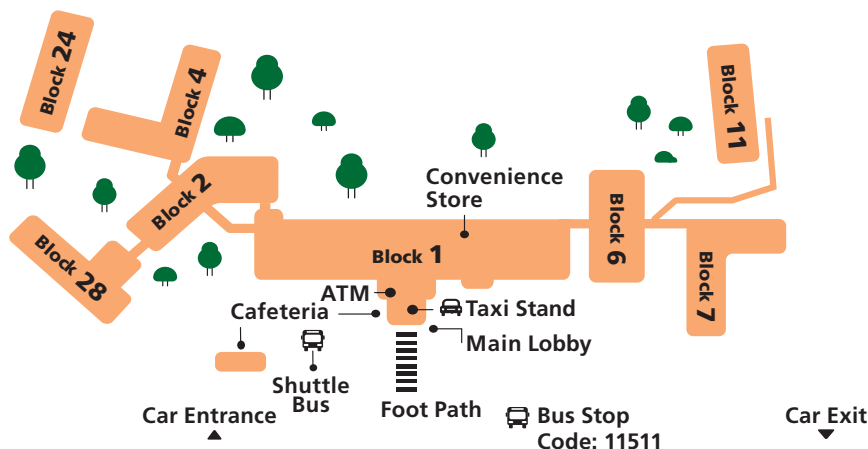
- **Queenstown MRT Station, Exit B**  
First bus: 10.00am  
Last bus: 7.40pm
- **Alexandra Hospital Main Lobby**  
First bus: 10.10am  
Last bus: 7.50pm

### From National University Hospital to Alexandra Hospital

Weekdays excluding  
Public Holidays

- **NUHS Tower Block**  
First bus: 10.00am  
Last bus: 5.00pm
- **National University Hospital (NUH), Medical Centre, Outside Burger King**
- **National University Hospital (NUH) Main Building, Lobby A**
- **Alexandra Hospital Pavement (Turn right after exiting main lobby)**  
First bus: 10.25am  
Last bus: 5.30pm

# How to Get Around Alexandra Hospital



## Block 1

### Level 1

- Clinic F, Clinical Measurement Centre
- Pharmacy

### Level 2

- Clinic J, Integrated Care Clinic
  - Gynaecology Clinic
  - Outpatient Infusion Centre (OPIC)
  - Podiatry
- Clinic K, Healthy Ageing Clinic
  - Dietetics
  - General Surgery Clinic
  - Palliative Clinic
  - Plastic Surgery Clinic
  - Physiotherapy
  - Rehabilitation & Restorative Medicine Clinic
  - Staff Clinic
  - Urology Clinic
  - Vascular Clinic

### Level 3

- Ward 7

## Block 2

### Level 1

- Clinic D, Dental Centre
- Clinic E
  - Anaesthesia Outpatient Consultation Clinic
  - Hand and Reconstructive Microsurgery Clinic

- Neurosurgery Clinic
- Orthopaedic Centre

### Level 3

- Day Surgery Operating Theatre (DSOT)

## Block 4

### Level 1

- Ambulatory Surgery Centre
- Endoscopy Centre
- Rehabilitation 1

### Level 2

- Wards 2 and 3

### Level 3

- Wards 4 and 5

## Block 6

### Level 1

- Diagnostic Imaging 2 (DI 2)
- 24-HR Urgent Care Centre

### Level 2

- Diagnostic Imaging 3 (DI 3)
- Major Operating Theatres 1 and 2 (MOT 1 & 2)

### Level 3

- Intensive Care Unit 1 (ICU 1)
- Major Operating Theatres 3 and 4 (MOT 3 & 4)

## Block 7

### Level 1

- Wards 8 and 9

### Level 2

- Wards 10 and 11

### Level 3

- Wards 12 and 13

## Block 11

### Level 1

- Rehabilitation 2

## Block 28

### Level 1

- Care and Counselling
- Clinic A, Ear, Nose and Throat Centre (ENT Centre)

### Level 2

- Clinic B, Eye Surgery Centre

## Start Your Healthcare Journey With Us

**Main Line**  
Call 6472 2000 to  
schedule an appointment  
or make enquiries.

**Email**  
For Appointments: [AH\\_Appointment@nuhs.edu.sg](mailto:AH_Appointment@nuhs.edu.sg)  
For Enquiries: [AH\\_Enquiries@nuhs.edu.sg](mailto:AH_Enquiries@nuhs.edu.sg)  
For Feedback: [AH\\_Feedback@nuhs.edu.sg](mailto:AH_Feedback@nuhs.edu.sg)

Alexandra Hospital 378 Alexandra Road, Singapore 159964.

Main Line: +65 6472 2000 | Fax: +65 6379 4339

[www.ah.com.sg](http://www.ah.com.sg) | [Facebook](https://www.facebook.com/AlexandraHospitalSG) | [Instagram](https://www.instagram.com/AlexandraHospitalSG) | [LinkedIn](https://www.linkedin.com/company/AlexandraHospitalSG)